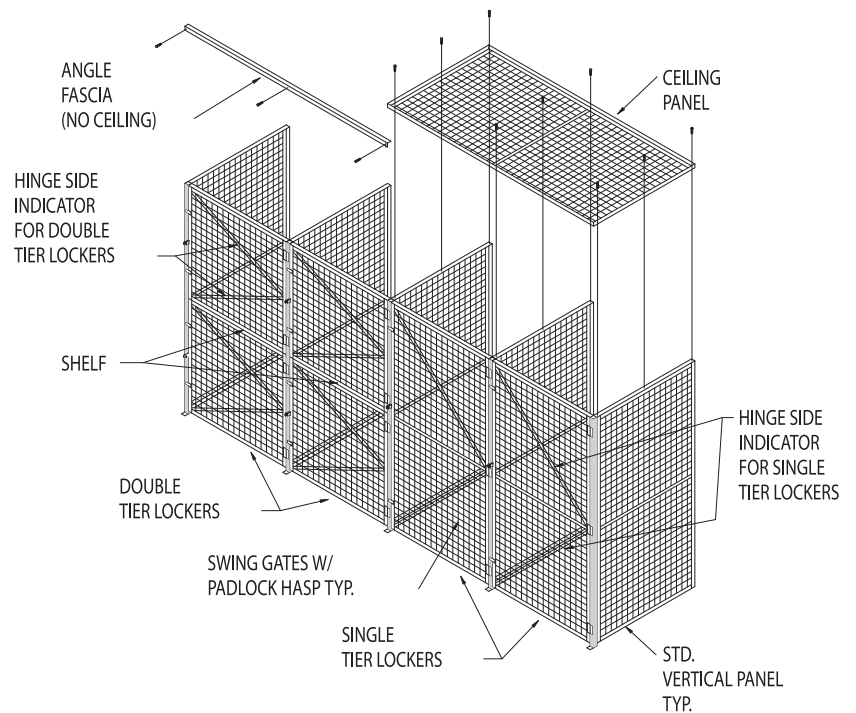


Cal Wire

Wire Mesh Products Since 1948



Cal Stor-N-Lock Welded Wire Storage Lockers

Benefits Of Cal Stor-N-Lock Storage Lockers

Security

Cal Stor-N-Lock storage lockers are the ideal solution to securing and organizing your valuable possessions. Wire mesh provides security, while permitting proper lighting and ventilation.

Simplicity

Cal Stor-N-Lock lockers can be erected easily with simple hand tools, along with our installation manual. Modular design makes future relocation or reconfiguration fast and efficient.

Applications:

Personnel Storage
Gym Equipment
Post Offices
Parking Garages
Colocation Areas

Military Bases
Retirement Communities
Apartment Facilities
Schools
Any Of Your Ideas!

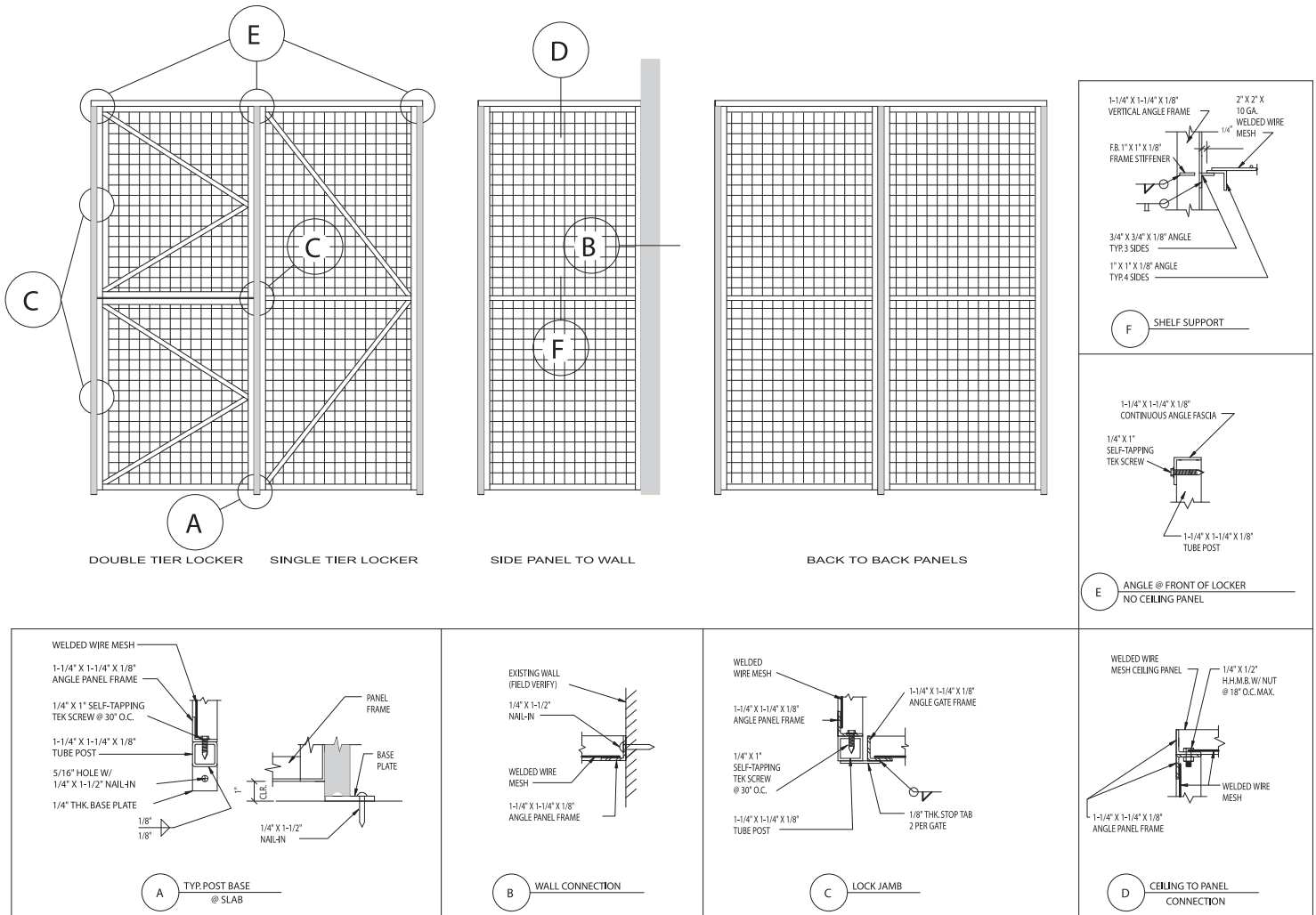
Also Available:

Special Finishes
Ceiling Panels
Double Doors
Handrail Infill Panels

Custom Sizes
Headerless Gates
Custom Colors
Window Guards



SPECIFICATIONS / CONSTRUCTION



WIRE

#10 W&M gauge steel wire welded into 2" square mesh, then welded to 1-1/4" x 1-1/4" x 1/8" angle iron frame.

DOOR PANELS

Framed in 1-1/4" x 1-1/4" x 1/8" angle and pre-hung on tube steel frames. All single tier doors have a horizontal stiffener bar. All doors are supplied with padlock hasps and three hinges.

HARDWARE

Standard 1/4" grade 2 plated nuts, bolts, and tek screws are supplied for assembly. 1/4" anchors are supplied for concrete wall and floor attachment.

FINISH

HVLP applied shop coat of Machinery Gray enamel. Optional colors are available.

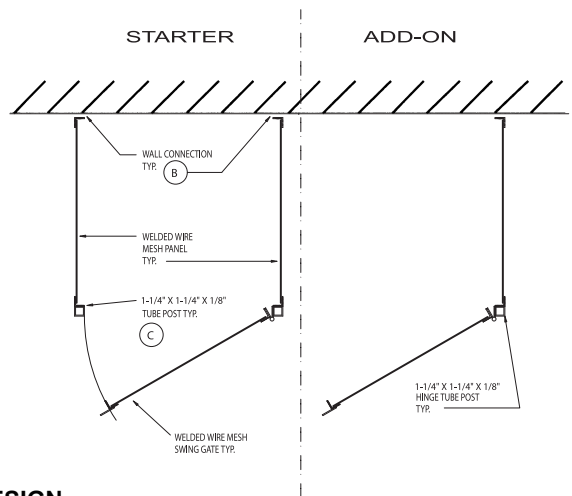
SINGLE OR DOUBLE TIER (DOUBLE TIER INCLUDES 1 SHELF)

Standard sizes from 3' to 5' wide and up to 7'-6" high. Depths are 3', 4', or 5'.

OPTIONS:

Ceiling - Lengths include 3', 6', 7', 8', 9' and 10'. Widths include 3', 4', and 5'.
Back - Sizes include 3', 4', and 5' widths, 7'-6" height.

Tops, additional shelves and bottoms are also available. They are constructed of the same material as standard wall panels.



DESIGN

Cal Stor-N-Lock offers multiple configuration options. The Starter Lockers consist of 2 wall panels and 1 door panel. The Add-On Lockers include 1 door and 1 wall panel, to use in combination with a Starter Locker or in a building corner. Available in single and double tier designs with available options including ceilings, backs, and shelves.

CALIFORNIA WIRE PRODUCTS CORP.

1128 West Bradford Circle · Corona, CA 92882
Ph. (800) 486-7730 · Fax (951) 735-1070
e-mail: info@cawire.com · http://www.cawire.com

Distributed By: