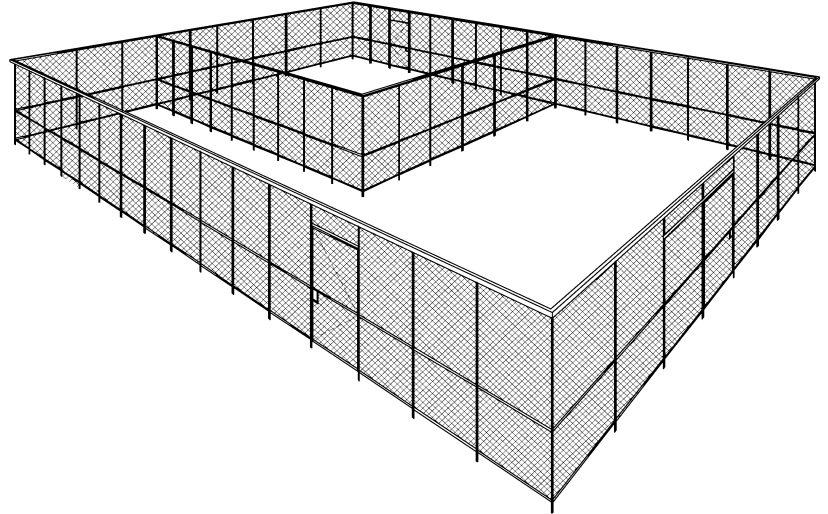


Cal Wire

Woven Wire Division

“Woven Wire Specialists Since 1948”



CAL WIRE Type 101 Construction Woven Wire Industrial Partitions

BENEFITS OF CAL WIRE WOVEN WIRE MESH:

Security

Heavy duty 10 gauge woven wire construction protects your valuable assets and inventory. Keyed mortise type locks are standard on all 101 gates.

Flexibility

Modular panel construction allows for quick and simple installation. Future layout changes are easy with Cal Wire's modular design.

Toughness

All wires are securely clinched or welded to heavy duty 12 gauge roll formed channel frames. Woven design allows for maximum impact resistance.

Efficiency

Open wall design provides visual security, while utilizing existing lighting, sprinklers, and HVAC.



Applications For Standard 101:

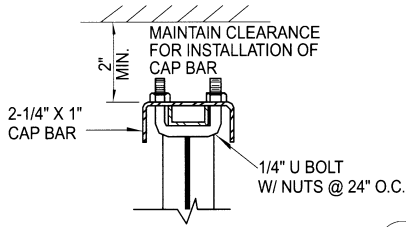
Stock Rooms	Data Centers
Tool Cribs	Colocation Facilities
Machine Rooms	Zoos
Armories	Stairwells
Post Offices	Banks
Prisons	Hospitals

Also Available:

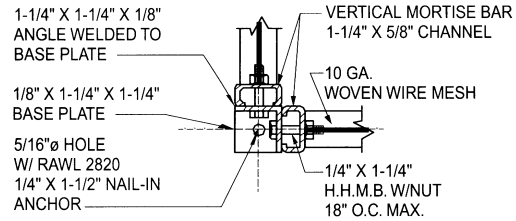
Handrail Infill Panels	Window Guards
Special Finishes	Custom Fabrications



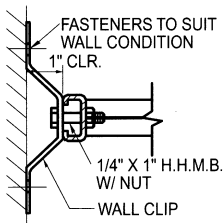
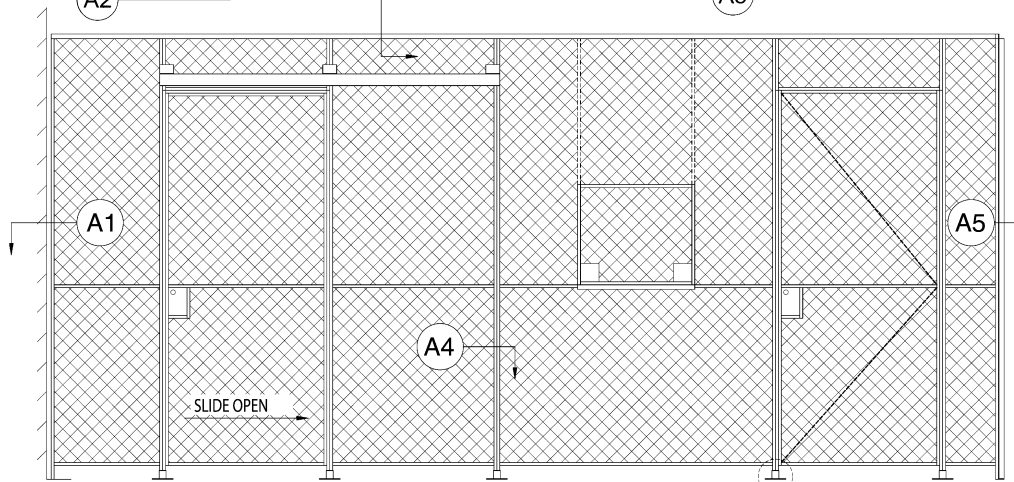
101 SPECIFICATIONS / CONSTRUCTION



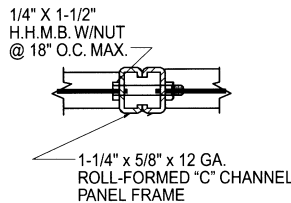
A2 CAP BAR



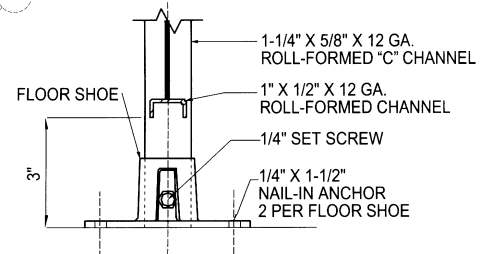
A5 90° CORNER POST



A1 WALL CLIP CONNECTION



A4 PANEL-PANEL CONNECTION



A3 FLOOR CONNECTION

WIRE

No. 10 W&M gauge steel wire 1-1/2" diamond mesh clinched and welded to frames.

VERTICAL FRAMES

1-1/4" x 5/8" roll-formed 12-gauge "C" shaped channel specially formed to prevent telescoping.

HORIZONTAL FRAMES

1" x 1/2" roll-formed 12-gauge channel using mortise & tenon construction for extra strength.

CENTER STIFFENERS

(2) 1" x 1/2" roll-formed 12-gauge channels riveted and welded for greater strength and rigidity.

CAPPING BAR

2-1/4" x 1" roll-formed 12-gauge steel channel with 1/4" "U" bolts 24" O.C.

FLOOR SHOES

2" high die-cast aluminum with set screw adjustment.

CORNER POST

1-1/4" x 1-1/4" x 1/8" 90° angle.

CALIFORNIA WIRE PRODUCTS CORP.

1128 West Bradford Circle · Corona, CA 92882
Ph. (800) 486-7730 • Fax (951) 735-1070
e-mail: info@cawire.com · http://www.cawire.com

SLIDING DOORS

Constructed of 1-1/2" x 3/4" x 12 gauge channel frame banded with 1/8" x 1-1/2" flat bar on (3) sides. The door is to have (2) four-wheel hangers with a box track.

HINGED DOORS

Constructed of 1-1/4" x 1/2" x 12 gauge channel frame banded with 1/8" x 1-1/4" flat bar on (3) sides. 1-1/2" pair butt hinges are welded to door sides and jamb.

SERVICE WINDOWS

Openings are 24" x 21" with a 12" shelf installed into standard panels and doors.

LOCKS

Doors are equipped with mortise type cylinder locks operated from outside with a key, and from inside with a recess knob. Padlock hasps and other options are also available.

FINISH

HVLP applied shop coat of Machinery Gray enamel. Standard options include Black, Blue, Tan, and Primer. Hot Dip Galvanized finish and special colors available upon request.

Distributed By:

